



# Aastha Surgical Co.

*xcellence* through

sustainable *experience*



An ISO 13485:2016 CERTIFIED COMPANY

**HD**  
**LED**

# Superior lights for superior surgery

MODEL: AS-40



## Technical data

Measured at 1 meter distance from the light emitting surface	
LUX Intensity	160000
Color Temperature (K)	3800~4800
Color rendering Index Ra (%)	98%
Color rendering Index R9 (%)	98%
Diameter d10 (mm) (Min)	110mm
*Diameter d10 (mm) (Max)	200mm
LED Power (W)	40
Illumination depth(mm) 60%	50mm
Illumination depth(mm) 20%	1000mm
LED Service Life	50000 hours
The quantity of LED Bulbs	40
Minimum Installation Height of Operating Room	2600mm
10 degree adjustment on the lighting illumination	10%~100%
Temperature rise in the surgical area surface	1.5°C
Temperature rise in the area of the surgeon's head	1°C

### SURGEON



### HEALTH CARE STAFF



### CLINIC



#### COMFORTABLE AND CONVENIENT

#### COST-EFFICIENT AND SAFE

Provides first class definition of tissues and blood vessels with the best R9 colour rendering.

Less eye stress thanks to green ambience

- Intuitive user interface
- Seamless control of light and
- Lightweight and easy to manoeuvre

- Designed, tested and optimised to make an ultra clean, ventilated environment
- Helps to reduce the patient's clinical risk



## Superb colour rendering

The R9 value is the best

in its class R9 94, which means a perfect value of red rendering and therefore a better definition of tissues and blood vessels for the surgeon. The R13 value 96 is also excellent, which is particularly important for plastic surgery and accurate skin colour.



**MODEL: AS-32**

**Technical Parameters:-**

Light intensity	140 000 lux
Adjustment of light intensity	5–100%
Colour temperature Tc	4300K (4800K)
Colour temperature Tc (lamps with adjustable colour temperature)	3700–5000 K
Light field diameter d10 at Ec	120 mm - 180 mm
Working range without refocusing	700–1400 mm
Colour rendering index	> 93
Number of LED's in light head	32
Increase of temperature near doctor's head	< 1 °C
Power supply	250V AC
Power consumption (±10%)	24-28 W
Life cycle of the lights	>50 000 h

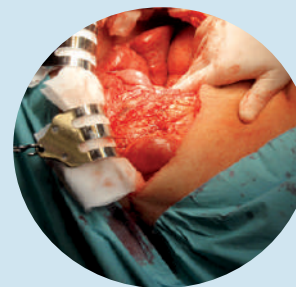
The control panel enables adjustment of light intensity and endoscopic illumination intensity. As an additional option it is also possible to add the functions for adjustment of color temperature and light field diameter.



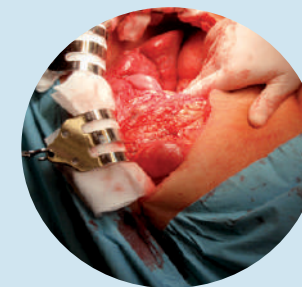
Sterile control handle enables precise positioning of the lamps and can be sterilized in an autoclave.

**Color temperature adjustment**

Wide range of color temperature adjustment enables changing the contrast of the observed tissue and reduces fatigue of operating surgeon, which affects the comfort and ergonomics of the medical staff.



3800 K



4200 K



4800 K







## MODEL: AS-24

### Technical Specification

No. of LED	: 24
Size of Dome	: 460mm.
LUX. (illuminates)	: 125000
Color Temp.	: 4300K
Input Power	: 24W
Spot Dia	: 120 mm.
LED Life	: More than 50000 Hrs.
Focusing Type	: Auto-focus
Depth of Field	: 100 mm.
Lamp Housing Type	: Corrosion Resistive
Shadow Reduction per Dome	: 94%



## MODEL: AS-HEX

### Technical Specification

No. of LED	: 32+32
Size of Dome	: 475mm.
LUX. (illuminates)	: 130000 x 2
Color Temp.	: 4300K
Input Power	: 64W
Spot Dia	: 100 mm.
LED Life	: More than 50000 Hrs.
Focusing Type	: Adjustable
Depth of Field	: 100 mm.
Lamp Housing Type	: Corrosion Resistive
Shadow Reduction per Dome	: 100%

### Operating lamps are offered in the following configurations of suspension:

- Ceiling suspension – single, double, triple
- Wall suspension
- Mobile basis

The suspension and little weight of the lamp as well as comfortable handles enable easy set up and positioning of the operating lamp.



### Operating and examination lamps

Operating lamps use LED diodes as light source. The most important features are good, persistent technical parameters, low radiation temperature and long working time.

LED is a technology of the future, environmental friendly. Our operating lamps have been manufactured with the highest concern for the natural environment.

The high efficiency of these light sources results in low energy consumption.



## Aastha Surgical Co.

Raisingh Ki Dhani, Gali No. 1, Near Ghanta Ghar,  
Bhiwani-127021 (Hr.), M.: 9416141554, 7015379144

Email: [vishu@asthasurgical.com](mailto:vishu@asthasurgical.com)

Website: [WWW.ASTHASURGICAL.COM](http://WWW.ASTHASURGICAL.COM)

